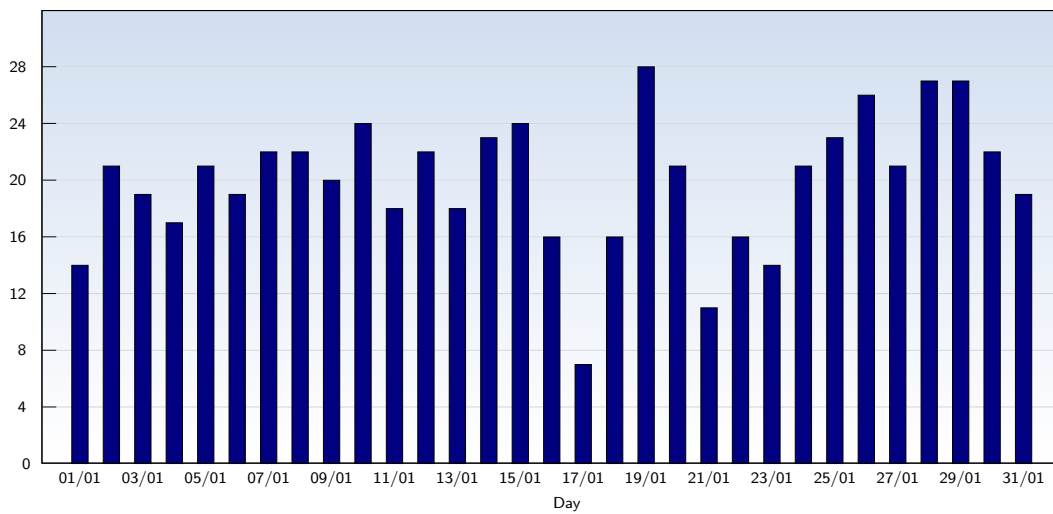


Unique Visits

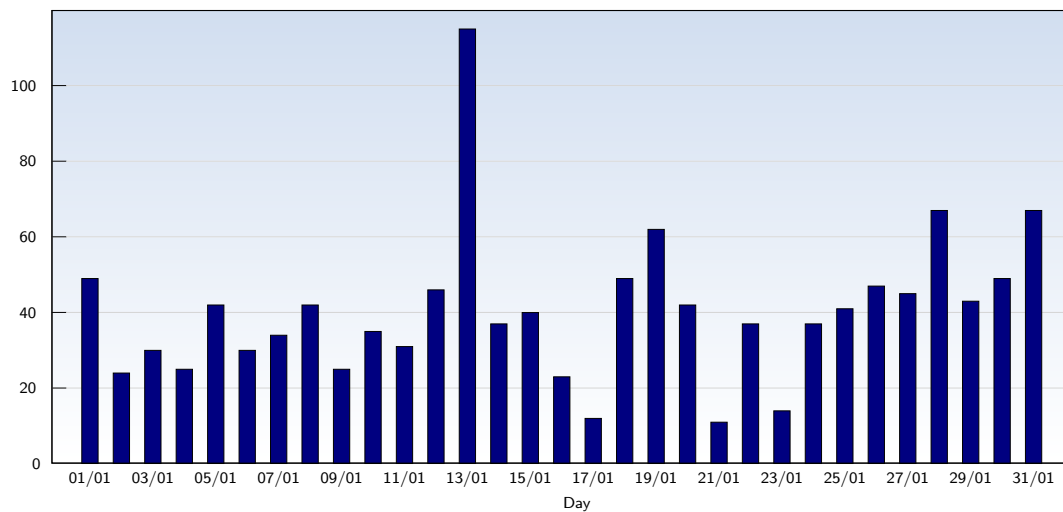


Date	Amount
Friday 01/01/10	14
Saturday 02/01/10	21
Sunday 03/01/10	19
Monday 04/01/10	17
Tuesday 05/01/10	21
Wednesday 06/01/10	19
Thursday 07/01/10	22
Friday 08/01/10	22
Saturday 09/01/10	20
Sunday 10/01/10	24
Monday 11/01/10	18
Tuesday 12/01/10	22
Wednesday 13/01/10	18
Thursday 14/01/10	23
Friday 15/01/10	24
Saturday 16/01/10	16

Date	Amount
Sunday 17/01/10	7
Monday 18/01/10	16
Tuesday 19/01/10	28
Wednesday 20/01/10	21
Thursday 21/01/10	11
Friday 22/01/10	16
Saturday 23/01/10	14
Sunday 24/01/10	21
Monday 25/01/10	23
Tuesday 26/01/10	26
Wednesday 27/01/10	21
Thursday 28/01/10	27
Friday 29/01/10	27
Saturday 30/01/10	22
Sunday 31/01/10	19
Total	619

This analysis summarises multiple page impressions of an individual visitor into unique visits. A visitor is counted as an unique visit when requesting at least one page. If more than 30 minutes have elapsed since the first page impression, further requests will be counted as a new unique visit.

Page Views

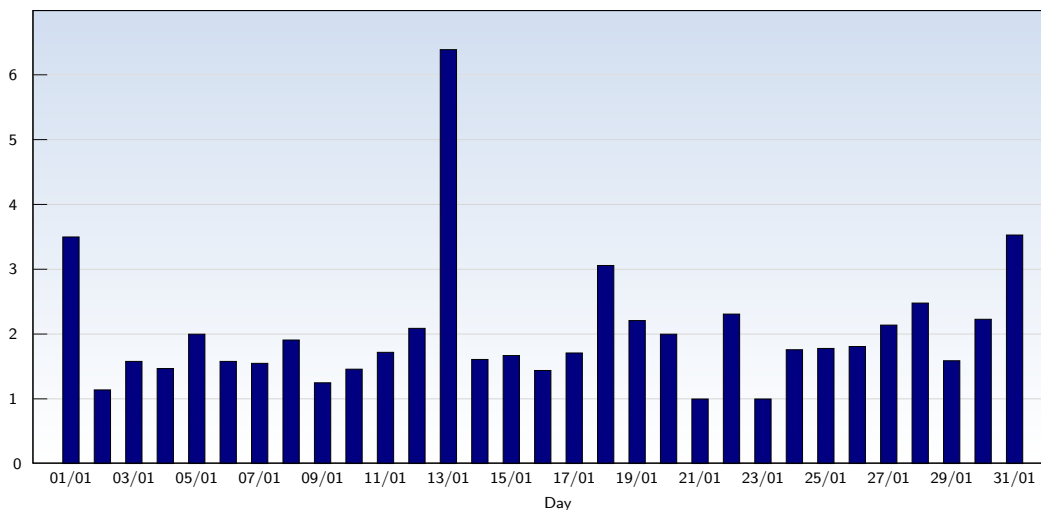


Date	Amount
Friday 01/01/10	49
Saturday 02/01/10	24
Sunday 03/01/10	30
Monday 04/01/10	25
Tuesday 05/01/10	42
Wednesday 06/01/10	30
Thursday 07/01/10	34
Friday 08/01/10	42
Saturday 09/01/10	25
Sunday 10/01/10	35
Monday 11/01/10	31
Tuesday 12/01/10	46
Wednesday 13/01/10	115
Thursday 14/01/10	37
Friday 15/01/10	40
Saturday 16/01/10	23

Date	Amount
Sunday 17/01/10	12
Monday 18/01/10	49
Tuesday 19/01/10	62
Wednesday 20/01/10	42
Thursday 21/01/10	11
Friday 22/01/10	37
Saturday 23/01/10	14
Sunday 24/01/10	37
Monday 25/01/10	41
Tuesday 26/01/10	47
Wednesday 27/01/10	45
Thursday 28/01/10	67
Friday 29/01/10	43
Saturday 30/01/10	49
Sunday 31/01/10	67
Total	1251

These statistics show all successful page views (also known as page impressions) and the time they were made. Only fully loaded pages are counted. Individual images and components are not included.

Pages per Visit



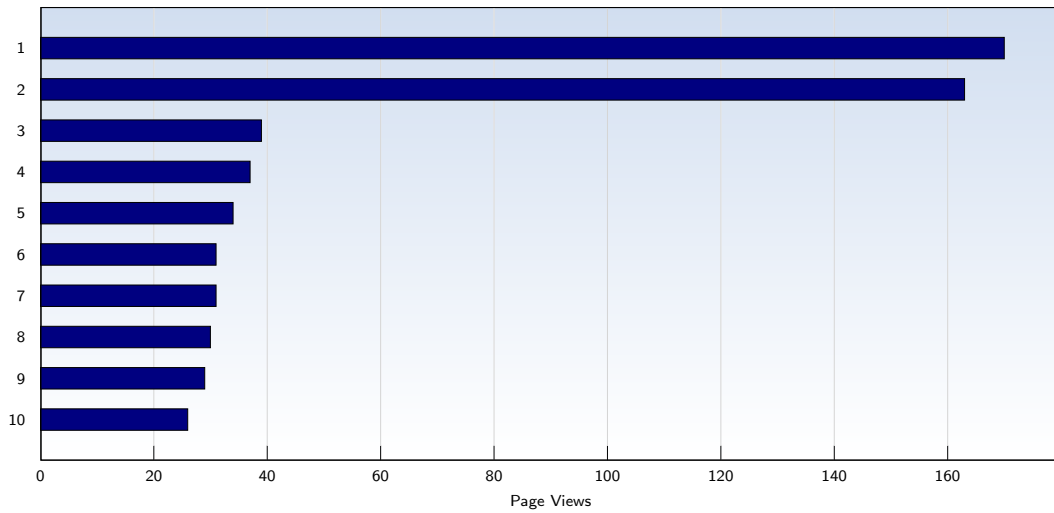
Date	Amount
Friday 01/01/10	3.50
Saturday 02/01/10	1.14
Sunday 03/01/10	1.58
Monday 04/01/10	1.47
Tuesday 05/01/10	2.00
Wednesday 06/01/10	1.58
Thursday 07/01/10	1.55
Friday 08/01/10	1.91
Saturday 09/01/10	1.25
Sunday 10/01/10	1.46
Monday 11/01/10	1.72
Tuesday 12/01/10	2.09
Wednesday 13/01/10	6.39
Thursday 14/01/10	1.61
Friday 15/01/10	1.67
Saturday 16/01/10	1.44

Date	Amount
Sunday 17/01/10	1.71
Monday 18/01/10	3.06
Tuesday 19/01/10	2.21
Wednesday 20/01/10	2.00
Thursday 21/01/10	1.00
Friday 22/01/10	2.31
Saturday 23/01/10	1.00
Sunday 24/01/10	1.76
Monday 25/01/10	1.78
Tuesday 26/01/10	1.81
Wednesday 27/01/10	2.14
Thursday 28/01/10	2.48
Friday 29/01/10	1.59
Saturday 30/01/10	2.23
Sunday 31/01/10	3.53
Average	2.02

The average number of pages opened per unique visit. Only fully loaded pages are counted.



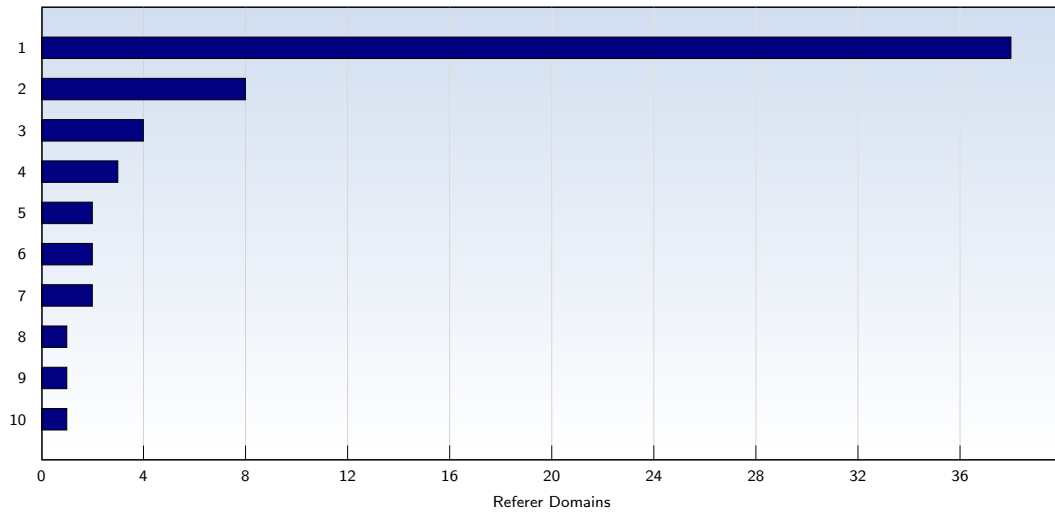
Top 10 Popular Pages



Rank	Page	Amount	%
1	the%2Dhedgehogs.org.uk/Hedgehogs2009/index.html	170	13
2	the%2Dhedgehogs.org.uk/Default.htm	163	13
3	the%2Dhedgehogs.org.uk/Hedgehogs2009/page5.html	39	3
4	the%2Dhedgehogs.org.uk/Hedgehogs2009/page83.html	37	2
5	the%2Dhedgehogs.org.uk/Hedgehogs2009/page8.html	34	2
6	the%2Dhedgehogs.org.uk/Hedgehogs2009/page4.html	31	2
7	the%2Dhedgehogs.org.uk/newbrochurevert/index.html	31	2
8	the%2Dhedgehogs.org.uk/Hedgehogs2009/page3.html	30	2
9	the%2Dhedgehogs.org.uk/Hedgehogs2009/page81.html	29	2
10	the%2Dhedgehogs.org.uk/Hedgehogs2009/page845.html	26	2
	Total	1251	

These statistics show you the most frequently called pages.

Top 10 Referer Domains



Rank	Domain	Amount	%
1	google.co.uk	38	6
2	google.com	8	1
3	farnham.gov.uk	4	0
4	yahoo.com	3	0
5	ask.com	2	0
6	google.com.au	2	0
7	ovale.ru	2	0
8	bing.com	1	0
9	farnhamcarnival.org.uk	1	0
10	farnhamcommunity.org.uk	1	0
	Total	65	

65 out of 619 visits contained a referer that could be evaluated. This analysis shows domains referring to your site. Subpages are summarised under the main domain.